

Impact

- [Introduction](#)
- [3. Good health & well-being](#)
- [4. Quality education](#)
- [6. Clean Water & Sanitation](#)
- [11. Sustainable Cities & Communities](#)
- [17. Partnerships for the Goals](#)

Introduction

This page provides substantial evidence about the actions taken by the University of Patras for the impact of its sustainable operation. The public summary of all actions that University undertakes can be found at the official website of the University, see

<https://www.upatras.gr/en/university/sustainability/>.

"Sustainable University of Patras in relation to the Sustainable Development Goals" is the main document that shows how the University of Patras addresses the UN SDGs.

The following information is structured according to the Times Higher Education Impact Rankings indicators list and information and data will be compiled in steps.

3. Good health & well-being



3.1 Research on health and well-being

Data for the indicator 3.1 Research on health and well-being (3.1.1 Good Health and Well-being: paper views, 3.1.2 Clinical citations, and 3.1.3 Good Health and Well-being: publications) is being collected via Scopus.

3.2 Number graduating in health professions

3.2.1 Proportion of graduates in health professions

- Graduate only: $694 / 4722 = 14.70\%$
- All levels: $864 / 5212 = 16.58\%$

Departments included: Department of Medicine; Department of Pharmacy; Department of Speech and Language Therapy; Department of Nursing; Department of Physiotherapy.

3.3 Collaborations and health services

3.3.1 Current collaborations with health institutions

The University has established collaborations -through MoUs- with several health-related institutions. These collaborations include, indicatively:

- local: Karamandaneio Hospital, "Aghios Andeas" Hospital, Association for Mental Health [SOPSI] Patras,
- national: National Public Health Organization, Non-profit association "Frontizo", Academy of Volunteerism HELPHELLAS, etc.
- international: John Hopkins University, Medicine School.

More information about the Memoranda can be found (in Greek) at

<https://erasmus.upatras.gr/agreements/mou>.

3.3.2 Health outreach programmes

The University is participating in the extensive campaign of the Charise Zoi (Give Life) programme for the growth of the bone marrow donor database in the country. A number of information/registration points are available within the University Campus as well as the local area for those interested to register as donors.

Other strategic activities include the weekly blood donation action coordinated by the Blood Center of the University Hospital and the National Center for Blood Donation. As evidence, please look at the relevant announcement available at <https://www.upatras.gr/i-aimodosia-paei-panepistimio-2/>.

Health outreach programmes are also delivered by the student and volunteer clubs, such as [Fleva Zois \(Vein of Life\)](#), [Hellenic Medical Students' International Committee - UoPatras, Greek](#)



Volunteering teams participate in the community.

The first image shows the registration box for marrow donors and the second image shows an advertisement banner for the weekly blood donation.

Other initiatives take place through the University Library that collects food and health material supplies for sensitive and vulnerable social groups through its exchange book programme. In various occasions, this material has been distributed to those in need by the local Association for the Defense of Refugees and Immigrants' Rights, see [this](#) and [this](#) Facebook announcement.

3.3.3 Shared sports facilities

The University Sports Camp, except from students and staff, is open to adults in the wider area of the city of Patras, for the purpose of their daily training, with access all seven days of the week, from early morning until late at night.

The University Sports Facilities are shared with local clubs and associations for the organization of local events, both free and in-paid manner. For instance, the Deaf Football Champions League was organized in Patras and many matches were hosted at the football stadium of the University Sports Facilities (June 20-25, 2022). This was provided free of charge and a news item can be found [here](#). Other paid events and programmes are:

- The University Sports Camp hosted the Qualifying Phase of the WU-19 European Football Championship at the football stadium (4-10/10/2022)
- Weekly trainings at the University football stadium of P.A.E. Panachaiki, a team that in season 2021-22 was playing in Super League 2 ([news item](#)),
- Weekly trainings at the University Indoor Sports Field of the volleyball team Aegialeon, that competes in the Men's Pre League, and the basketball team Keravnos Aigiou that competes in A1 Men ESKA-I, ([news item](#)).
- Sport programs for the school-age kids of the staff of the University of Patras, the schools of the University Campus, but also residents of the wider area of the city of Patras in daily and weekly training sessions at the University sports facilities for football, basketball, volleyball, athletics, table tennis, etc. ([news item](#))
- Sport programs [for adults](#) for the staff of the University of Patras as well as residents of the wider area of the city of Patras at the University sports facilities for aerobic/pilates and table tennis.
- Summer Sports Camp (June and July 2022) for the staff of the University of Patras, the schools of the University Campus, but also residents of the wider area of the city of Patras in the sports facilities of the University of Patras ([news item](#)).



Images of the sports facilities as shared by two clubs, Panachaiki and Aegialeon, and used for kids programmes.

3.3.4 Sexual & reproductive health care services

Sexual and reproductive health care services are provided in the University Hospital.

3.3.5 Mental health support

The services provided by the Office of Psychological Support are available to all students at the University of Patras, who face personal difficulties and other kind of mental health issues. Such difficulties include problems in their studies (difficulties in adapting to academic life, exam stress, reduced performance, lack of motivation), difficulties in interpersonal relationships (anxiety, loneliness, depression) and other problems like dependencies, psychosomatic problems and eating disorders. The Office for Psychological Support provides counseling and psychological support, diagnosis and treatment services. More specifically, the services provided are individual sessions, participation in support and empowerment groups as well as seminars organized at regular intervals. All services are provided free of charge, they are strictly confidential and subject to applicable laws (GDPR). More information is available at

<https://socialwelfare.upatras.gr/psychological-support-office/?lang=en>.

3.3.6 Smoke-free policy

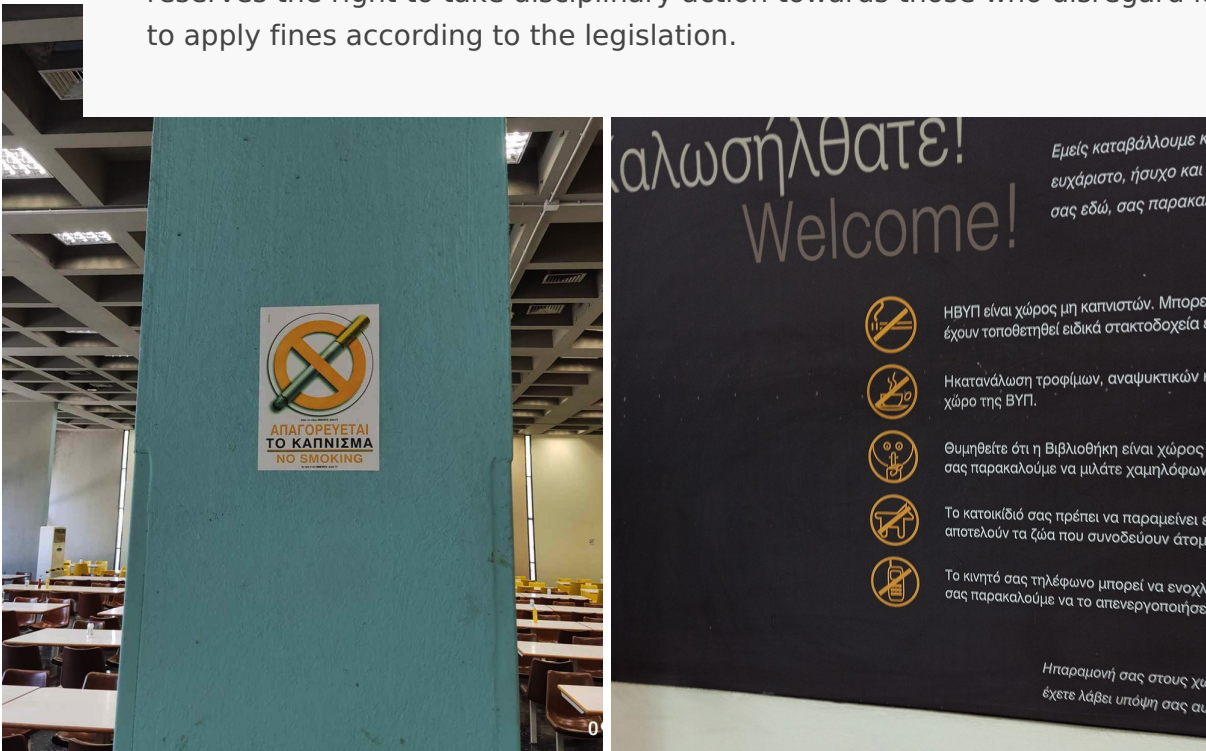
The Smoke-free policy can be found on the home page of the [Office for Security and Hygiene](#) (middle spot) via a link to the official document of the Ministry of Health (in Greek) and also on the webpage <http://osh.upatras.gr/index.php/smoking-policy>.

The University of Patras' smoking policy refers to all tobacco products. As a general rule, following the national legislation and specifically the ministerial decision no: Δ2β/Γ.Π.οικ. 80727/15.11.2019 (Government Gazette B' 4177), smoking isn't allowed indoors, including all working areas, hallways, staircases, restrooms and warehouses. The policy applies also to all University vehicles, as well as to all canteens, restaurants, and cafeterias of the campus. Smoking is prohibited indoors at any time, not just during working and teaching hours.

The University permits smoking during normal breaks or at the end of working and teaching hours in designated smoking areas, balconies and open-air verandas, gardens, yards, and sidewalks, provided that the smoker is acting responsibly for the safe extinguishing and disposal of any tobacco product.

The University takes measures to prevent smoking in all its facilities by removing ashtrays and posting notices.

The University expects all employees and students to respect this policy and the legislation. The University may reprimand anyone that violates the policy and reserves the right to take disciplinary action towards those who disregard it and to apply fines according to the legislation.



Images of signage in the University campus for the prohibition of smoking; the left from the student's restaurant and the right from the library.

4. Quality education



Data for the indicator 4.1. Research on early years and lifelong learning education (4.1.1 Quality Education: paper views, 4.1.2 Quality Education: CiteScore, and 4.1.3 Quality Education: publications) is being collected via Scopus.

4.2 Proportion of graduates with teaching qualification

4.2.1 Proportion of graduates with relevant qualification for teaching

- Graduate only: $468 / 4722 = 9.91\%$
- All levels: $558 / 5212 = 10.7\%$

Departments counted: Department of Education and Social Work; Department of Educational Sciences and Early Childhood Education. It should be noted that other Departments' graduates are able to work on secondary education schools, e.g. teaching biology, physics, etc.

4.3 Lifelong learning measures

4.3.1 Public resources (lifelong learning)

The University has developed and made available several [Open Courses](#) aimed towards broader audiences (i.e. beyond students specializing in a particular study area). The audience may include undergraduate students from different Departments of the University of Patras, students from other Institutions, graduates from the same or a different Department as well as the general public.

There is no limitation following an Open Course or using its resources. The complete list is available at <https://opencourses.gr/results.xhtml?ln=el&uni=Πανεπιστήμιο+Πατρών> and information about the project can be found at <http://ocw-project.upatras.gr>.

Finally, the University Library is open to the general public for studying. According to its [Regulation](#) unemployed citizens are entitled to a waiver for registering to other services, such as circulation of material, etc. A translation of the article 5.1. of the Regulation follows:

Unemployed people, who can obtain an External User Card, without paying the one-off amount, by presenting a valid OAED unemployment card. The duration of the membership card is annual and the validity of the unemployment card is regularly checked.

4.3.2 Public events (lifelong learning)

The Science and Technology Museum carries out a variety of on-site thematic educational programs for all levels of education with various topics related to the permanent exhibition and temporary exhibitions of the Museum. The educational programs are planned in collaboration with teachers and students from various Departments of the University of Patras. Given the recent developments due to the Covid-19 pandemic Distance Learning Programs are also offered, through WebEx or Zoom platforms. Furthermore, the Museum organizes several other public events, competitions, lectures, seminars etc. One of them was organized in collaboration with the Hellenic Section of the International Council of Museums on the celebration of the European Academic Heritage Day, under the theme "University Museums: actions for the environment and sustainability", on Friday 25 /11/2022. Such activities can be found at the [annual report](#) of the Museum.

Other public events are being hosted by the University's Conference and Cultural Center. Most events are open to the general public, especially those that present project results and/or addressing topics of popular science. A complete list is available at <http://www.confer.upatras.gr/events.php>.

The University Library is also hosting events that are open to the public. Two of those are the [observation of the partial solar eclipse](#), organized jointly with the Astronomical Society "Orion", and the [old/vintage school textbooks exhibition](#), organized jointly with the Museum of School Life and Education and the Department of Tourism Management of the University of Patras.

The University of Patras participates every year in the Researcher's Night. According to the official description, *"the European Researchers' Night is a Europe-wide public event, which displays the diversity of science and its impact on citizens' daily lives in fun, inspiring ways. The European*

Researchers' Night aims to bring research and researchers closer to the public, promote excellent research projects across Europe and beyond, increase the interest of young people in science and research careers, and showcase the impact of researchers' work on people's daily lives." The event takes annually place in Patras too. Evidence for the event in 2022 can be found at

<https://researchersnight.gr/2022-2/>.

4.3.3 Vocational training events (lifelong learning)

The University operates the [Lifelong Learning Center – University of Patras](#), which offers several courses for vocational training. The Center was established in 2018 with the main purpose to design, organize and operate lifelong training programs in a wide range of fields such as technology, administration, health, humanities, education, art etc. Distance and blended learning are the main methods for the implementation of the programs and the Center is continuously exploring new attractive methods and approaches to enhance adult education, training and employment. The Center provides both free and paid courses. Indicative courses:

- [Human rights and sexuality education](#)
- [Environment, viability and sustainable development: applications in education](#)
- [Training Farmers and Producers in Cutting Edge Technologies in the Agricultural Sector. Digital Transformation and Agricultural Production \(SMARTeDU\)](#)

Furthermore, the University operates the Auditor of University Courses. Citizens who wish to do so, have the opportunity to attend university courses of their choice from those offered by Departments. They are eligible to receive a special card from the Secretariat of the Department, which allows them to attend specific courses, for a certain period of time. It should be noted that they do not participate in exams or in laboratory, clinical or tutorial exercises, and they receive a certificate of attendance at the end of each semester.

- [Announcement in Greek \(for every new year\)](#)
- [Website](#)

4.3.4 Education outreach activities beyond campus

This is an indicative list of activities:

- The Department of Education and Social Work provided supportive interventions in Roma communities to strengthen access to education and reduce the dropout rate of children and adolescents in the Region of Western Greece. According to the project, intercultural education is a pedagogical approach aiming to tackle social and intra-school problems that arise within a multicultural society and affects socially vulnerable group of citizens, such as the Roma. It is an approach with a holistic character, which concerns, in addition to the members of the Roma group, the social environment in which they live in. The implementation of the project primarily seeks to address the educational inequality and marginalization of this social group by improving the conditions for inclusion and

participation of Roma children in the education system. More at <https://roma.upatras.gr>.

- The Laboratory of Pedagogical Research and Lifelong Education of the Department of Educational Science and Early Childhood Education undertook the assessment of the TEACH4_I (Teach for Integration) project, which involves the training of 3,750 teachers working in institutions with refugee and migrant children. The programme is implemented by three Universities (National and Kapodistrian University of Athens, Aristotle University of Thessaloniki and University of Thessaly), supervised and funded by the UNICEF Office in Greece and under the auspices of the Ministry of Education, Religious Affairs and Sports and the Institute of Educational Policy.
- The Children's Festival is organized by students from the Department of Educational Science and Early Childhood Education of the University of Patras in collaboration with faculty of the Department. Every year, at the end of spring and for one week, about 2000 children of preschool age visit the Children's Festival, together with their teachers or parents, in order to participate in creative activities and educational orientation workshops, which take place in the premises of the Department. More information at <https://childrenfestival.gr/en/timeline/>.
- As mentioned above the Museum of Science and Technology is offering Distance Learning Programs, through WebEx or Zoom platforms. A description can be found on its [website](#).
- The Laboratory of Greek Language and Culture of the University of Patras has collaborated with the Association of Greek-Ukrainian Friendship "Faros" during the summer of 2022. The Laboratory provided free of charge Greek language courses to Ukrainian war refugees who have been settled in the region of Patras with the aid of the "Faros" association. The provision of the language course serves the Goal 4 of SDGs especially 4.4. and 4.5 as the knowledge of Greek language would enable the refugees (vulnerable group) to better integrate to Greek society and find a job. Furthermore, the attendees were women, who are more vulnerable than men when in refugees' status, thus we provided a chance to smooth out the differences between genders (Goals 5 and 10).

(Note: Also mentioned in SDG17)

4.3.5 Lifelong learning access policy

The University prescribes in the Internal Regulations (latest version published on the [Government's Gazette, II, 5468, 14/09/2023](#)) explicitly that all of its activity is governed by the following principles:

2. The operation of the University of Patras is supported to a set of values, which are based on the principles of freedom of teaching and research, free expression and circulation of ideas, respect of the rights of the members of the University Community and of the society as a whole, of justice, of meritocracy, transparency, accountability, equality, as well as on the principle of the cooperation of every institution of the University Community in the context of compliance with the Constitution, the Laws and Regulations. Any discrimination,

which is related with color, gender, sexual orientation, racial, national or ethnic origin, age, religion or ideology, is considered impermissible.

(Article 3: Mission and Targets)

4.4 Proportion of first-generation students

4.4.1 Proportion of first-generation students

This information is not available.

6. Clean Water & Sanitation



Data for the indicator 6.1. Research on water (6.1.1 Clean Water and Sanitation: CiteScore, 6.1.2 Clean Water and Sanitation: FWCI, 6.1.3 Clean Water and Sanitation: publications) is being collected via Scopus.

6.2 Water consumption per person

37.07 L per person (as product of the division 900m^3 per day / 24,277 per day)

Methodology

- We record the daily water consumption [$A = 900\text{m}^3/\text{day}$], as provided by the pumping stations and tanks.
- We record the number of members of the academic community per category and we determine the attendance rate of each category of staff (for permanent staff based on the provisions of the law, for students and contract workers an estimate). Then, we calculate the daily attendance per staff category and overall [$B = 24,277$ persons].
- Finally, we calculate the water consumption per person per day: $[A]/[B]$

Comparing the above absolute value with the mean water consumption in Greece, ~ 150 L per capita per day, our equivalent water consumption index is reasonable and even more efficient taking into account: a) the variance of attendance during the year (e.g. the months of July and August are characterized by minimal student attendance), b) Christmas and Easter holidays, c) the mean hours spent by each member of the community in the campus, and d) the breakdown (uses) of water consumption matching activities in the campus and the full water use profile for the students residing in the dormitory.

6.3 Water usage and care

6.3.1 Wastewater treatment

The Wastewater Treatment Plant of the Campus of the University of Patras covers the needs of both the University and the University Hospital. The technical details of the Plant are as follows:

- Wastewater Flowrates 1200-1500 m³/d ~500.000 m³/yr
- Low strength domestic wastewater. Organic load 250mg/L COD (Chemical Oxygen Demand), 120 mg/L BOD5 (5 days Biochemical Oxygen Demand)
- Secondary treatment (activated sludge extended aeration system, (biological and chemical processes used to remove organic matter from wastewater)
- Main process unit: Extended Aeration tank (Oxidation Ditch 1400 m³ with horizontal Brush Aerators (2Kaessener Mammot Rotors 30KVA)).
- Retention Time >18h, Organic matter removal and partially denitrification
- Effluent characteristics: COD< 30 mg/L (legislation limit 125), BOD5 <10 mg/L (Legsl. Limit 25), TN < 15mg/L, TP= 2-4 mg/L, SS (Suspended Solids) <25 mg/L

Drone recording of the Wastewater Treatment plant by Vangelis Tsiotsis.

<https://www.youtube.com/embed/tmqNody9e6U?si=J0MNPfQ8vw-LPRHu>

6.3.2 Preventing water system pollution

During Over the previous years, the asbestos pipes of the entire water supply network asbestos pipes have been replaced and there has been an extensive repair work was also undertaken on of the University's main water supply tank. Parts of the old asbestos pipes of the primary water supply network were replaced with new polyethylene pipes and, at the same time, manholes were constructed for the installation of new valves. The sections briefly concern (1) the replacement of the depression (pressure) pipe from the node of the central outpost of the University of Patras to the central water supply pumping station, (2) the replacement of the gravity (supply) pipeline from the node of the central outpost of the University to a point near the node of the University Hospital, (3) the replacement of the gravity (supply) pipeline from the Geology node to the central point of the Library and Biology-Mathematics buildings area wells, (4) the new water supply for the central outpost of the University and (5) the replacement of the gravity (supply) pipeline from the node of the Holy Temple of the University to the node of the Department of Civil Engineering building to the new PC building.

The sections of the new primary water supply network are made of 3rd generation polyethylene pipes, 16bar, PE 100. All pipes are suitable for potable water networks and are accompanied by the

appropriate certificates.



The left image shows visible parts of the pipe network which have been replaced with polyethylene pipes and the right image the chlorination station that prevents water pollution.

6.3.3 Free drinking water provided

The water is potable throughout the University campus.



An image of public water taps in the student restaurant.

6.3.4 Water-conscious building standards

The sanitary ware has reset mechanisms, an adjustable float, a double switch for high and low water supply and are generally designed with a view of saving water resources. All current water supply networks are compliant with the latest technological standards. As it has been described beforehand, the primary water supply network is being made of 3rd generation polyethylene pipes, suitable for potable water networks.

6.3.5 Water-conscious planting

The University has the largest campus in terms of area in the country. It is surrounded by an olive grove. The trees are not water consumption and help the rain waters drain easier. The grove is being collected every Autumn, producing its own oil.



Drone photo of part of the olive grove, next to the Library and the Civil Engineering buildings provided by Vaggelis Tsiotsis.

6.4 Water reuse

A network for the treated wastewater to be used for irrigating 20 hectares (200 acres) of land south of the Campus is currently being installed.

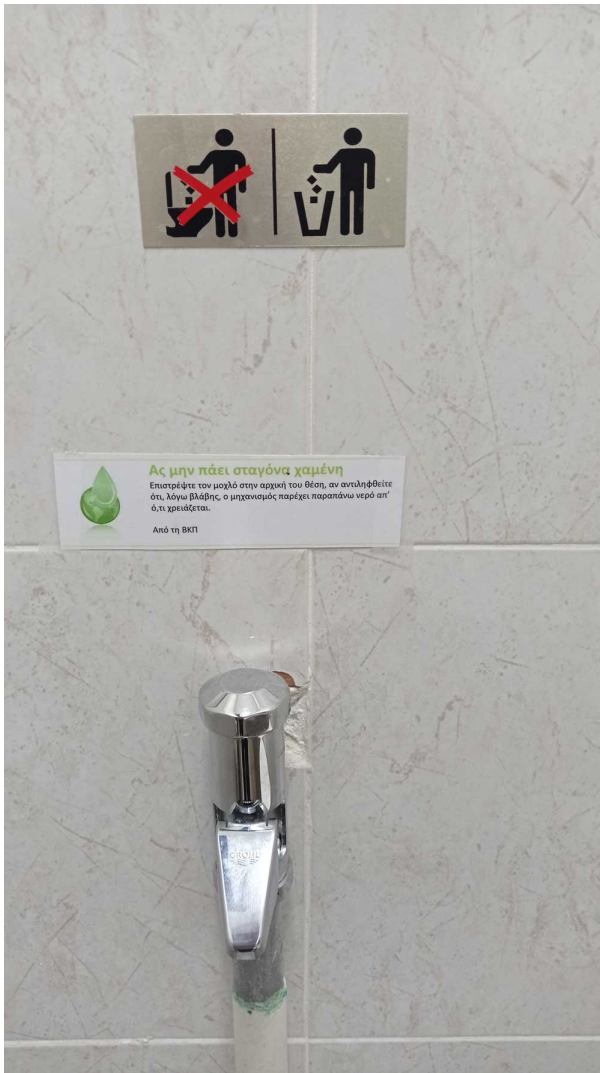
6.5 Water in the community

6.5.1 Water management educational opportunities

The Campus Wastewater Treatment Facility is utilized for the training of undergraduate and graduate students and for the preparation of diploma theses. An indicative list of theses and dissertations can be found below, with links from the Institutional Repository (see indicatively <http://hdl.handle.net/10889/5163> and <http://hdl.handle.net/10889/13432>). It also provides activated sludge to various laboratories of the University for BOD measurements (5d(index)) as well as inlet (raw sewage) and outlet (treated sewage) samples of the installation.

6.5.2 Promoting conscious water usage

Throughout the campus there are signs for the proper use of water. Below you may find an image of a sign in the library building.



6.5.3 Off-campus water conservation support

Since 2020, the University supports the Municipality of Patras and the Municipal Water Supply and Sewerage Company of Patras (DEYAP) with its wastewater management. This is taking place in the frame of the "RE-water -Eco technologies for the waste water management", financed by the "COOPERATION PROGRAMME: (Interreg V-A) EL-IT - Greece-Italy" EU. Quoting from the [official announcement on the website of the Municipality of Patras](#) (in Greek):

DEYAP in recent years has expanded cooperation with departments of the University of Patras for the development and application of new technologies in Water Supply-Sewage and wastewater treatment. Within the framework of this policy, it also participates in the action of the Interreg Greece-Italy Cooperation

program entitled "RE Water- Management".

6.5.4 Sustainable water extraction on campus

Currently there are two pumping stations in the University, using the water table at 60 meters

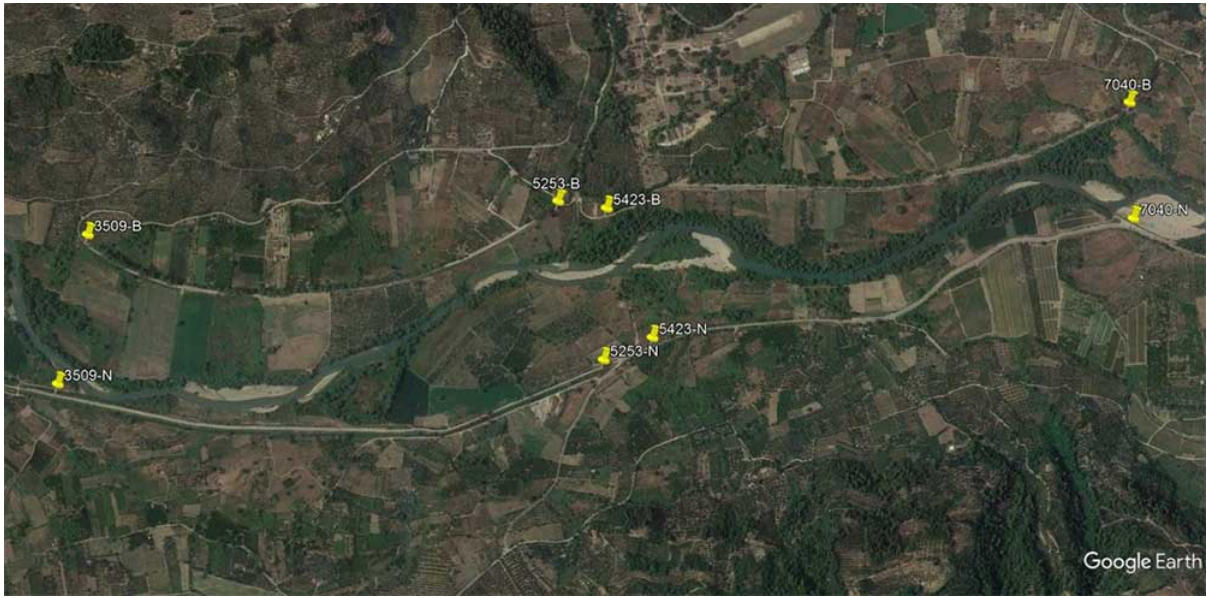


s, the
n the

Images of the pumping stations.

6.5.5 Cooperation on water security

During the period 2021-2023 (2022 included) the Hydraulic Engineering Laboratory of the Department of Civil Engineering collaborated with the Regional Government of Western Greece on the project "Proposals of short-term measures and interventions to limit the intensity of flooding phenomena in critical parts of the hydrographic network of P. Alpheios, including P. Kladeos (lowland bed) and Erymanthos, following the fires of August 2021". Below one can find one of the images from the technical report on the protection against river flooding in the area of Ancient Olympia (the exact document cannot be shared).



11. Sustainable Cities & Communities

Under development



Data for the indicator 11.1 Research on sustainable cities and communities (11.1.1 Sustainable Cities and Communities: CiteScore, 11.1.2 Sustainable Cities and Communities: FWCI & 11.1.3 Sustainable Cities and Communities: publications) is being collected via Scopus.

11.2 Support of arts and heritage

11.2.1 Public access to buildings

The University allows access to its buildings, especially those of the Central Administration, the Museums and Libraries (as mentioned below), the Sports Facilities and the Conference and Cultural Center. Canteens and cafes of the University Campus are also accessible by the public.

11.2.2 Public access to libraries

Access to the University Library and its branches is open to the public for reading and studying. Any citizen can be registered to the Library, with an one-off fee, while unemployed citizens can issue a library card without any charge.

11.2.3 Public access to museums

Access to the University Museums, such as the Museum of Science and Technology, are open to the public. The Museums offer several programmes for schools of the Region and can be visited throughout the year.

11.2.4 Public access to green spaces

The University campus, which is the largest campus in Greece, is free to be accessed by everyone, especially by pedestrians.



11.2.5 Arts and heritage contribution

The Conference and Cultural Center hosts many public events, not only from the academic community, but from cultural organizations of the city, associations and clubs, etc. A list of the events that hosts can be found at <http://www.confer.upatras.gr/eventsen.php>. Furthermore, the University campus is decorated by several statues, sculptures and other artistic assets, photos of which can be found [here](#).

11.2.6 Record and preserve cultural heritage

The University Library has digitized many cultural heritage collections. Among these one can find the [digital collection "Daniilis"](#) that publishes old literature and historic journals and newspapers from the wide Region of Achaia (in cooperation with the Municipal Public Library of Patras) and the [digital collection "En Patrais"](#) for the Industrial Archaeology of Patras on the Diogeneia platform.

11.3 Expenditure on arts and heritage

11.3.1 Arts and heritage expenditure

to be completed

11.4 Sustainable practices

11.4.1 Sustainable practices targets

The University redesigns the campus map to include new green zones (such as the side-urban park), planting and transplanting of trees, new green routes for pedestrians and cyclists, procurement of electric and conventional bicycles, creation of a parking base and photovoltaic charging system, etc., with the aim to provide quality living, sports and recreation to all members of the community.

The University promotes new energy sources, through the installation of charging stations for electric vehicles, as well as the reuse of energy sources by means of special chargers. Photos of these activities can be found [here](#).

11.4.2 Promote sustainable commuting

Commuting to the University Campus is possible through local bus transportation (every five to ten minutes on peak hours) and the suburban train.

- [Urban Transportation of Patras: Information about the bus routes](#)
- [Hellenic Train: information about the suburban train to the University and the University Hospital](#)

The University also promotes the value of lifelong use of the bicycles in our daily life through organized bike rides in the Campus. A video from the local TV can be found below.

https://www.youtube.com/embed/0ZtNvCoDddE?si=W7dnm003_tLiIHs

11.4.3 Allow remote working

Remote working is possible (special authorization is necessary). It should be noted that in special occasions (see for instance Covid Pandemic) remote working was exercised successfully in most functions of the University.

11.4.4 Affordable housing for employees

There is no policy, as there is no explicit need.

11.4.5 Affordable housing for students

The University is offering housing to all fresh students, either in its Residences, or in Hotels in the city center. In the Student Residences also stay all who are eligible based on financial criteria (low income students). New Residence buildings are being built.

11.4.6 Pedestrian priority on campus

There are sidewalks all over the campus and many routes to walk from one building to the other.

11.4.7 Local authority collaboration regarding planning and development

to be completed

11.4.8 Planning development - new build standards

The environmental upgrade of buildings and infrastructure through targeted actions to reduce resource consumption, in order to minimize the environmental footprint. Five buildings have already been energy upgraded, while two more have been included in the “Eco – Economy” program.

11.4.9 Building on brownfield sites

There is no such need, as the University Campus is built on a new

17. Partnerships for the Goals



Data for the indicator 17.1 Research into partnership for the goals (17.1.1 Proportion of output co-authored with low or lower-middle income countries and 17.1.2 Partnerships for the goals: publications) is being collected via Scopus.

17.2 Relationships to support the goals

17.2.1 Relationships with regional NGOs and government for SDG policy

The University is member of the Sustainable Development Solutions Network, see

<https://www.unsdsn.org/greece>.

Other indicative relationships:

- The Soil Science Laboratory (Department of Agriculture) is a member of GLOSOLAN (Global Soil Laboratory Network).
- Professor Athanassios Dimas (Department of Civil Engineering) is a member of a committee organized by the Ministry of Infrastructures and Transportation to assess the development of National Guidelines for the design of marine and coastal projects (SDGs 6 and 14).

17.2.2 Cross sectoral dialogue about SDGs

Indicative participations:

- The iGEM_Medicine (students from the School of Medicine) prepared a report how they address in their community and scientific groups the SDG. The interdisciplinary student group iGEM_Medicine was established in 2022 and participated in the Global Synthetic Biology Competition “iGEM 2022” (International Genetically Engineered Machine) in Paris, October 26-28, 2022. With its Project, the Patras_Medicine team aimed to create an innovative diagnostic tool for lung cancer and explored the application of several SDGs on the top, see <https://2022.igem.wiki/patras-medicine/sustainable/>.
- The Laboratory of Research and Tourism Satellite Account (La.Re.T.S.A.) of the Department of Business Administration of the University of Patras participates in the UNWTO Expert Group on measuring the sustainability of tourism (MST) by providing its expertise in the formulation of an internationally recommended MST framework.

17.2.3 International collaboration data gathering for SDG

The University is member of the Sustainable Development Solutions Network, see <https://www.unsdsn.org/greece>.

Other indicative collaborations:

- The Global Soil Laboratory Network (GLOSOLAN) was established in 2017 to build and strengthen the capacity of laboratories in soil analysis and to respond to the need for harmonizing soil analytical data. Harmonization of methods, units, data and information is critical to (i) provide reliable and comparable information between countries and projects; (ii) allow the generation of new harmonized soil data sets; and (iii) support evidence-based decision making for sustainable soil management. The work of GLOSOLAN supports the implementation of the Sustainable Development Goals, the Agenda 2030 for Sustainable Development and the mandate of FAO on food security and nutrition. University of Patras participates through the Soil Science Laboratory of the Department of Agriculture.
- The University assists in the collection of protected marine by catch fisheries species under the frame of a Mediterranean project entitled "Understanding Mediterranean multi-taxa bycatch of vulnerable species and testing mitigation – Phase 2 (MedBycatch Phase 2)" (9E209001) funded by WWF.

17.2.4 Collaboration for SDG best practice

The University is member of the Sustainable Development Solutions Network, see <https://www.unsdsn.org/greece>.

17.2.5 Collaboration with NGOs for SDGs

Indicative collaborations:

- The Hydraulic Engineering Laboratory (Department of Civil Engineering) in collaboration with the Regional Government of Western Greece undertook two research programs: (a) the protection against river flooding with emphasis in the area of Ancient Olympia and (b) the protection against coastal erosion in the areas of Vrachnaiika-Tsoukalaiika (SDG 6).
- The Laboratory of Greek Language and Culture of the University of Patras has collaborated with the Association of Greek-Ukrainian Friendship "Faros" during the summer of 2022. The Laboratory provided Greek language course fee free to Ukrainian war refugees who have been settled in the region of Patras with the aid of the "Faros" association. The provision of the language course serves the Goal 4 of SDGs especially 4.4. and 4.5 as the knowledge of Greek language would enable the refugees (vulnerable group) to better integrate to Greek society and find a job. Furthermore, the attendees were women, who are more vulnerable than men when in refugees' status, thus we provided a chance to smooth out the differences between genders (SDGs 5 and 10).
- The Laboratory of Greek Language and Culture of the University of Patras also collaborated in 2022 with the local Shelter for women victims of violence. We aid a woman, hosted in the Shelter, to study the Greek language and take part in the exams for the Greek language certification, an important certificate when applying for job. (SDGs 5 and 10).
- Collaboration with WWF, ISEA Environmental Organisation for the Preservation of the Aquatic Ecosystems, Tethys Research Institute (SDG 14).

17.3 Publication of SDG reports

17.3.1 to 17.3.17 Publication of SDG reports - per SDG

17.4 Education for the SDGs

17.4.1 Education for SDGs commitment to meaningful education

On the open access institutional repository "Nemertes" one can find theses and dissertations from many Departments on the Sustainable Development Goals.

- [List of theses and dissertations \(2022\)](#)
- [List of theses and dissertations \(all years\)](#)

17.4.2 Education for SDGs: specific courses on sustainability

As mentioned in the page for SDG4, the University operates the [Lifelong Learning Center - University of Patras](#), which offers several courses for vocational training. The Center provides both free and paid courses. Indicative courses mentioning SDGs are:

- [Human rights and sexuality education](#)
- [Environment, viability and sustainable development: applications in education](#)
- [Training Farmers and Producers in Cutting Edge Technologies in the Agricultural Sector. Digital Transformation and Agricultural Production \(SMARTeDU\)](#)

17.4.3 Education for SDGs in the wider community

The iGEM provides [resources on the SDGs](#) to the wider community, using gamification techniques in order to be more accessible by the younger ages.

The University Press has released the book [Education & Economic Development for Sustainability](#) in 2022. The book aims to highlight the interaction between sustainable economic development and the provision of quality education in the Greek context. The main future purpose and focus of the research and analysis of the book is sustainability.